



# THOMSON

 3  2  2

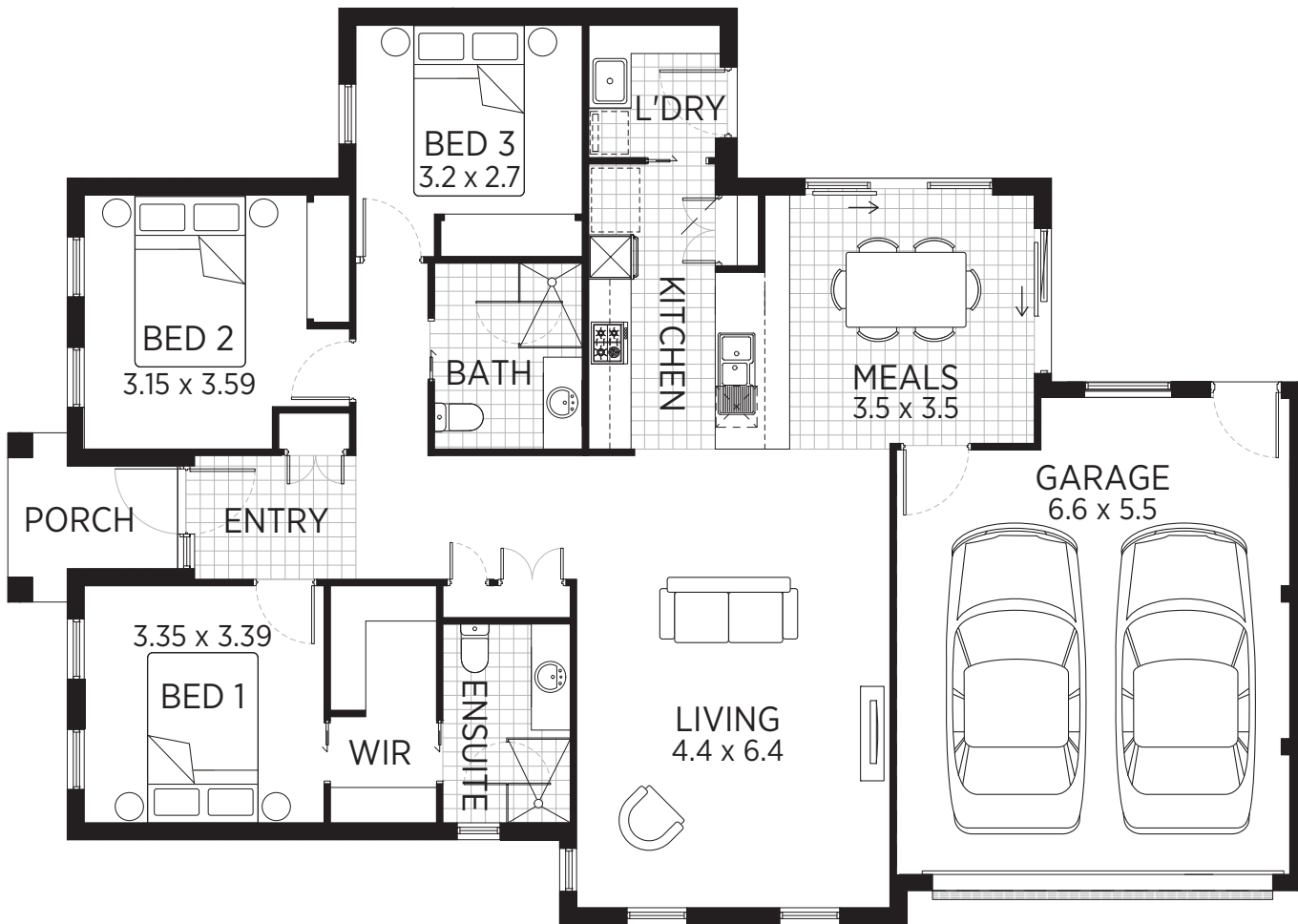
SERENITY, STYLE AND SPACE – THE THOMSON HAS IT ALL.

Step through the entryway, into the heart of the home - a spacious open-plan living area, offering an indoor-outdoor lifestyle with an added bonus of the low maintenance private backyard, perfect for hosting friends, family, or lounging in luxury. You too will be delighted to enjoy your private backyard, the sun-soaked dining area or the multi-purpose breakfast bar. The well-appointed kitchen is fitted with quality Bosch stainless steel appliances and Caesarstone benchtops. Relax in your generous master suite, complete with a WIR and ensuite, with another two bedrooms and an additional bathroom for guests. Bright and airy throughout, the Thomson is a true oasis.

\* Timber flooring in the above interiors shown, are an upgrade option.

# THOMSON

 3  2  2



ALL OUR HOMES DESIGNED WITH BACKYARDS.

	HOME	GARAGE	TOTAL
m <sup>2</sup>	132.8	33.6	165.8
Sq	14.3	3.6	17.8

The plan, images and information contained in this brochure are indicative only and subject to change without notice. Homes may be modified or mirrored.